

PRODUCT INFORMATION

WHV STEEL BRACING TYPE A-C

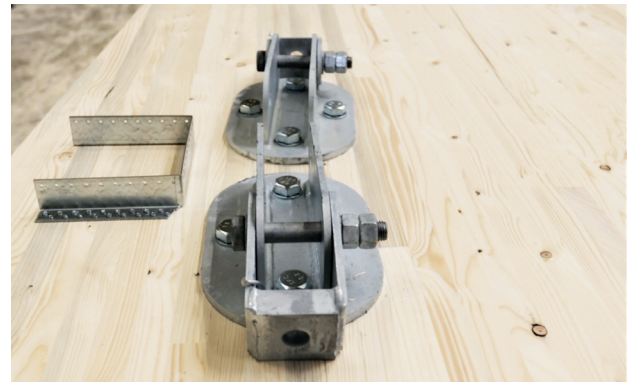
WIEHAG WIND BRACING WHV TYPE A/B/C

- Simple and economical
- Available quickly thanks to standardised stock steel parts
- Tolerances of ± 20 mm can be accommodated
- Only 90-degree drilled holes in main beam required
- Pre-assembled on beam



WIEHAG wind bracing with round-rod diagonals

	Max. tensile force	Ø rod (mm)	Thread	min. Truss width:
Typ A	86	16	M18	140
	100	20	M22	160
Typ B	136	20	M22	160
	159	24	M24	200
Typ C	159	27	M27	200
	159	24	M24	140
	206	27	M27	180
	240	30	M30	200



Two steel parts if the bracing inclination changes

TIE-BAR SYSTEMS

WE USE THE FOLLOWING SYSTEM MANUFACTURERS

- Besista , HMR, Pfeifer, Detan, Mürmann, Macalloy, Anker Schröder
- Cross-bracing possible with discs or sleeves
- Pretensioning possible, depending on manufacturer

Further information can be found in the "Special Steel Parts" data sheet.



Riding school roof, Großarl
Trussed parallel beams with HMR tie-bar system



HMR tie-bar system with cross-sleeve and circular disc