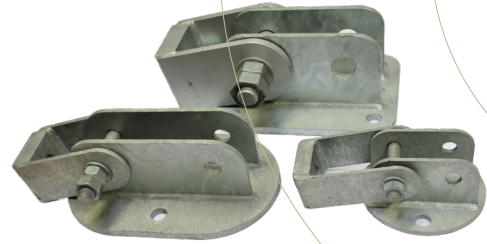


WHV STEEL BRACING TYPE A-C



WIEHAG WIND BRACING WHV TYPE A/B/C

- Simple and economical
- Available quickly thanks to standardised stock steel parts
- Tolerances of ± 20 mm can be accommodated
- Only 90-degree drilled holes in main beam required
- Pre-assembled on beam



WIEHAG wind bracing with round-rod diagonals

	Max. tensile force	rod (mm)	Thread	min. Truss width:
Type A	86	16	M18	140
	100	20	M22	160
Type B	136	20	M22	160
	159	24	M24	200
Type C	159	27	M27	200
	159	24	M24	140
	206	27	M27	180
	240	30	M30	200



Two steel parts if the bracing inclination changes

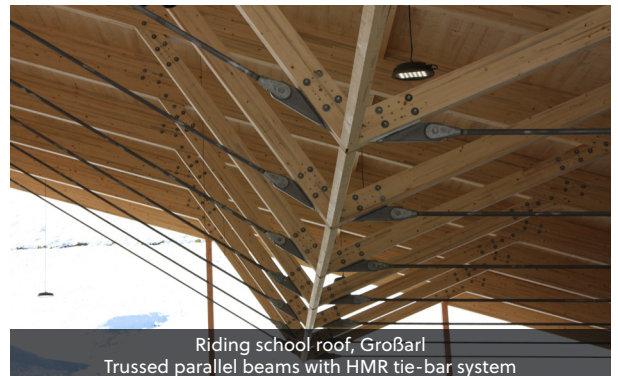
TIE-BAR SYSTEMS

WE USE THE FOLLOWING SYSTEM MANUFACTURERS:

- Besista , HMR, Pfeifer, Detan, Mürmann, Macalloy, Anker Schröder
- Cross-bracing possible with discs or sleeves
- Pretensioning possible, depending on manufacturer

Further information can be found in the **"Special Steel Parts"** data sheet

[OVERVIEW OF ALL PRODUCT DATA SHEETS >](#)



Riding school roof, Großarl
Trussed parallel beams with HMR tie-bar system



HMR tie-bar system with cross-sleeve and circular disc